

Lewis Wilson

Enoch Vernon

James Steadwood

Geo. Zeone

John Young  
401 ac & 26 ps & alle

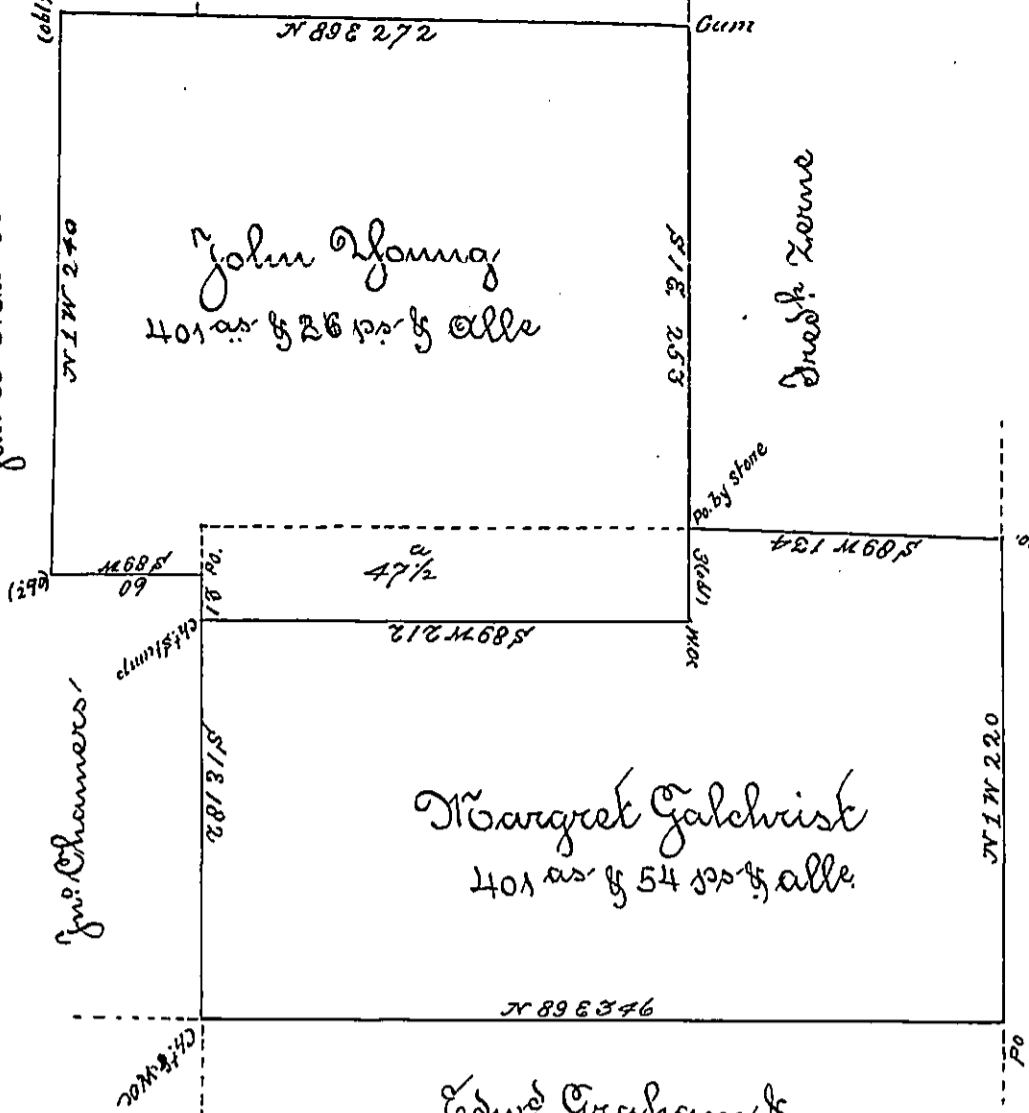
Jno. Chalmers

Margret Galchrist  
401 ac & 54 ps & alle

John Meekling

Edw. Graham &  
Hugh McClimens

What is within or South of the Dotted  
Line Disputed by Jacob Meekling



Surveyed for John Young & Margret Galchrist the (oblit'd) Described Tracts of land situate on the Waters (obl't) (obliterated) Creek Butler County Containing their Actual Settlement Surveyed for John Young on the 2<sup>nd</sup> of July 1840 and for Margret Galchrist on the 15<sup>th</sup> day of 19 - balance of this return obl or gone -

IN TESTIMONY that the above is a copy of the original remaining on file in the Department of Internal Affairs of Pennsylvania, made conformably to an Act of Assembly approved the 16th day of February, 1833. I have hereunto set my Hand and caused the Seal of said Department to be affixed at Harrisburg, this fourth day of February 1896 -

James W. Fatta  
Secretary of Internal Affairs.